

1 Introduction

OpenVPN allows you to connect roving individual computers (laptops or off-site desktops) as if they were plugged in directly into your network (with just a little slower bandwidth). The following document will step you through installing the OpenVPN software, downloading your configuration files and encryption keys and setting up your computer on your company's Domain. You will need to know the relevant IP address of your Up Time ISF (Internet Security Firewall) and the ISF's Web Interface admin password.

There are basically three steps:

1. Download and Install the approved OpenVPN software from Up Time.
2. Download and Unzip the necessary Configuration files from the ISF.
3. Configure the OpenVPN Network Connection for your Company.

2 Download and Install Approved OpenVPN Software

Go to <ftp://ftp.uptime.org/pub> and download a file called: *openvpn-xxx.exe* (where the "xxx" is a number like 209, etc). In IE you can choose the "Run" option, in Firefox Save it to your Desktop and double click it when it is done.

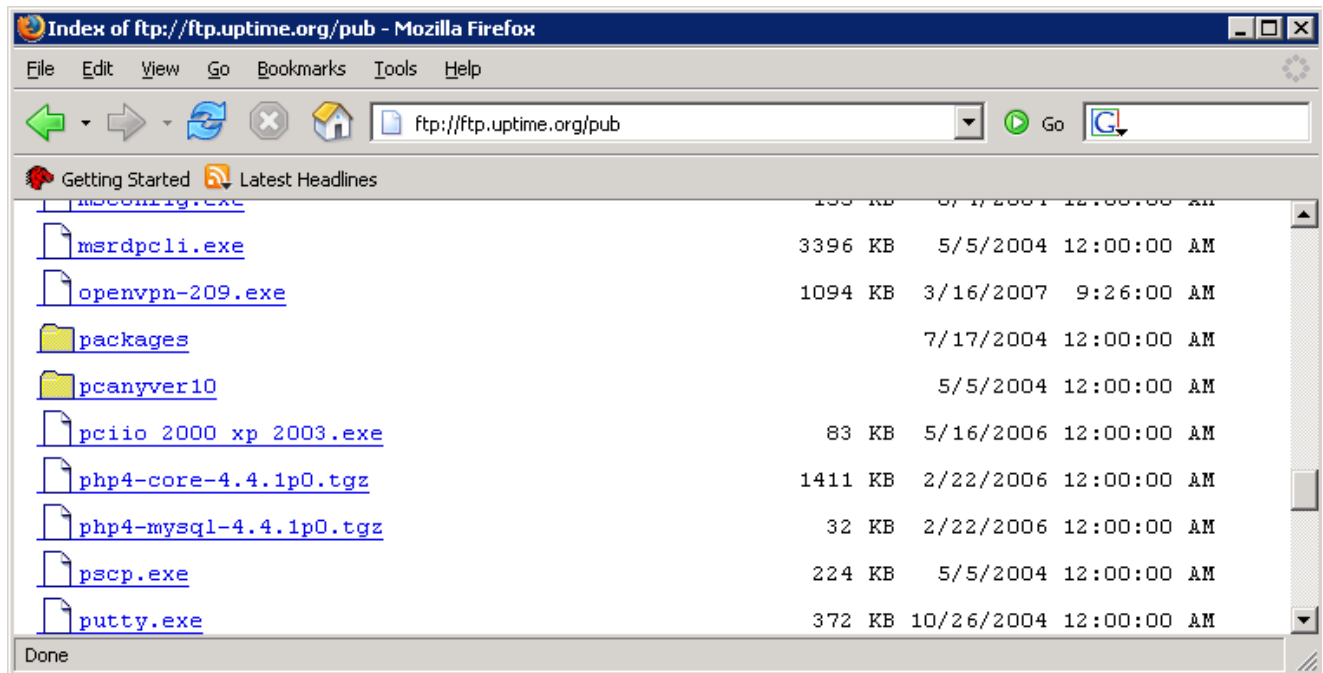


Figure 1: Download from Up Time

Answer all the questions in the affirmative (i.e. Next, Yes, Continue Anyway, Finish, etc). Note that the default option is always the affirmative with *ONE* exception. Windows will warn you about unapproved software/driver and the default is "STOP INSTALLATION", but you want to click "Continue Anyway".

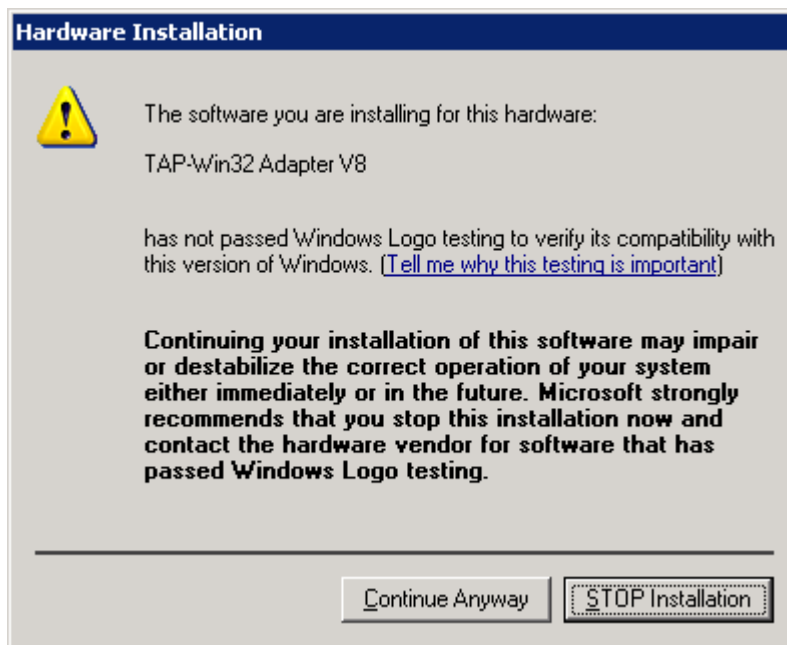


Figure 2: Careful! Click Continue Anyway!

3 Login to the ISF Web Interface for Configuration Files

3.1 Login to your ISF Web Interface

From the machine you are installing the software on, login to your ISF web interface. If you are inside your office (where the ISF is located) you can usually type something like:

`http://192.168.11.1/admin/`

in your browser. The “192.168.11.1” is the inside IP address of the ISF. If you don’t know this address, you can either click Start, then Run. In the Run box type the three letters: “cmd” and click RUN/OK. A black window pops up and you then type: `ipconfig`

The resulting display will show you your default gateway.

If you are not in your building but at a user’s house, you may try something like: `http://xxx.xxx.xxx.xxx/admin` where the xxx.xxx.xxx.xxx is the outside (real world) IP address of your Up Time ISF. If you do not know that address or it does not work, call Up Time and we can help you get access.

Once you have the ISF’s Web Interface, enter username: admin and your password. If you don’t know your admin password for the ISF (which will be different than your Windows Administrator password), then call Up Time and we can reset it for you.

3.2 Save the Owner of VPN Config Files

On the left of the ISF Web Interface is a “VPN” link. Click that and you will be presented with a table of possible VPN client configurations to use. On the far right of each line is the “Owner” of those configuration files. Only one person can use one configuration at a time and it is very important to track who has which configuration! Find an empty Owner box and type in an identifying name for assigning the configuration files. Most of the time it will probably be the name of the person using the files. However some people will have more than one. Identify who has it and on which machine. For example: Larry Laptop and Larry Home. Other options are

locations like: warehouse (if the warehouse is offsite), or Loaner Laptop (if there is a spare laptop that people use when theirs is broken). The idea is to be able to identify the machine that the files belong to in the event the machine is compromised or stolen (if it is you would “Revoke and Replace” that machine’s config files *ASAP* to avoid unwanted access to your network). Type in the identifying name and click the Change Owner button.

Up Time ISF Configuration and Administration - Mozilla Firefox

File Edit View Go Bookmarks Tools Help

https:// /admin/

Getting Started Latest Headlines

Up Time ISF Administration

SysInfo&Rebo

NAT

Port Fowards

Web Usage Reports

Site Blacklist

Spam Filter

Attachment Recovery

DHCP

VPN

Apache

Software VPN Certificate Management

Click [here](#) to download the highest approved revision number of OpenVPN!

Halt All OpenVPN Connections (i.e. Emergency Shutoff)

ShutDownVPN

Current Certificates

Save the XXclient.ovpn and XXopenvpn.key file in C:\Program Files\OpenVPN\config\ or save the zip file and extract to that same config directory

Client Number	Client files in .zip format	Client .ovpn File	Client Key File	Revoke and Replace this Key	Owner
1	1.zip	1client.ovpn	1openvpn.key	Revoke Client 1 and Generate New Key	Bob Laptop ChangeOwner
2	2.zip	2client.ovpn	2openvpn.key	Revoke Client 2 and Generate	 ChangeOwner

https://www.newmanlaw.com/cgi-bin/admin/vpn.pl

www.newmanlaw.com

Figure 3: Remember to Save the new Owner!!

3.3 Download the Configuration Files

Click on the X.zip file on the same line as the owner and download the zip file to your Desktop. Once there, double click the .zip file and you will be shown the contents of the zip file. On the left is a link that says “Extract All Files”. Click on that and then Next. You will hit the Browse button to find the folder to put them in. The folder you want is:

C:\Program Files\OpenVPN\config

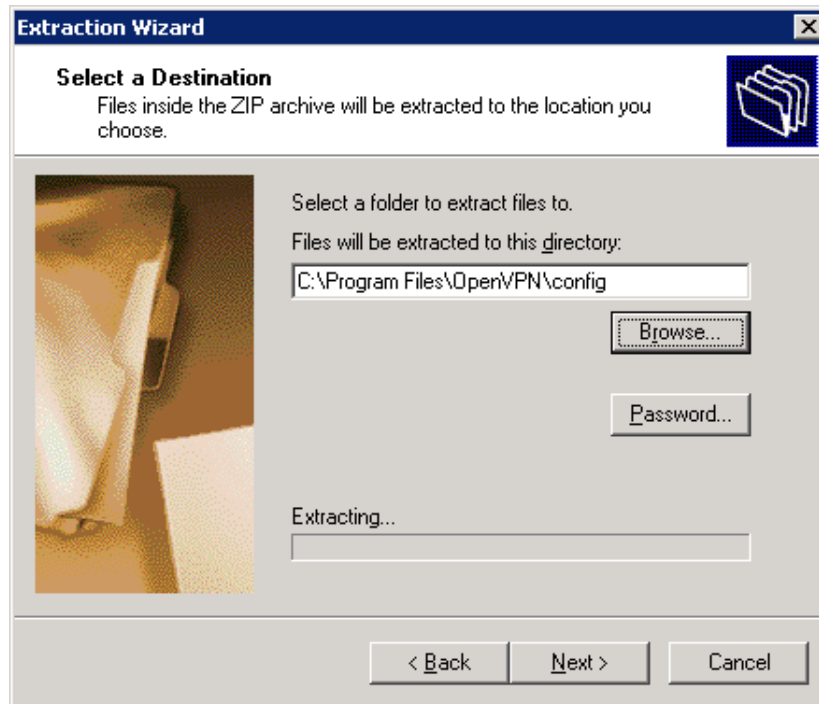


Figure 4: Unzip into OpenVPN's Config directory

Click Next/Finish and the basic install is done.

4 Configure the OpenVPN Network Connection

4.1 Rename the OpenVPN TAP Adapter/Connection

Go to the Network Connections window. This can be found in the Control Panel or often from the Start Menu. You should see a new Local Area Connection that has a description of TAP-Win32 Adapter. Right Click the Connection and choose Rename. Rename the Connection: OpenVPN. Right click it again and choose properties.

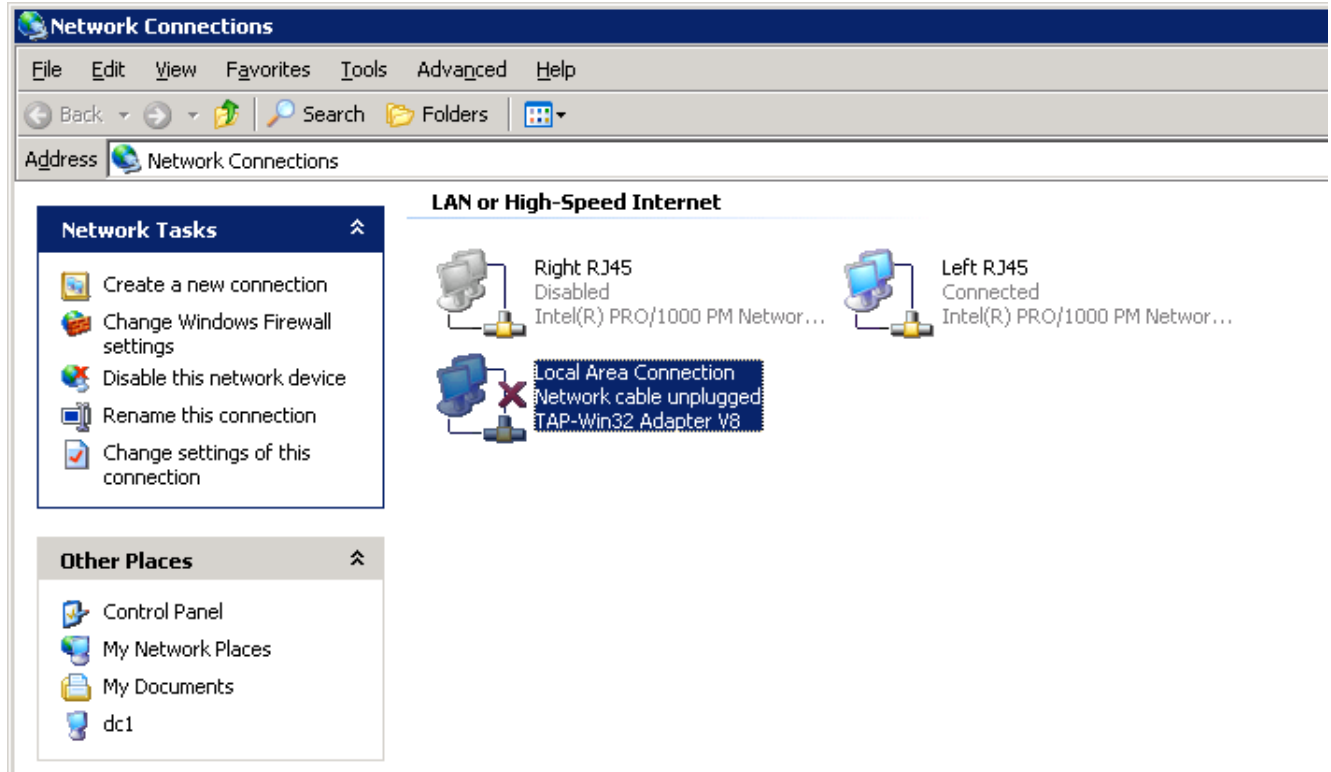


Figure 5: Rename the TAP Connection OpenVPN or something to help you remember

4.2 Set DNS to your Domain Controller

From Properties double click TCP/IP. On the bottom of that screen click "Use these DNS Servers". Add in the ip address of your local DNS server. This should be an in-office Domain Controller (if you don't know what IP address this is, then please call Up Time and we can find that information out for you).

4.3 Add your Active Directory Domain Name

Then Click on the Advanced Button. Then click the DNS Tab. Click the "Append these DNS suffixes (in order)" button. Then click the "Add" button and add your Active Directory Domain name.

Say Okay/Next/Finish/etc to all that and you should be ready to go.

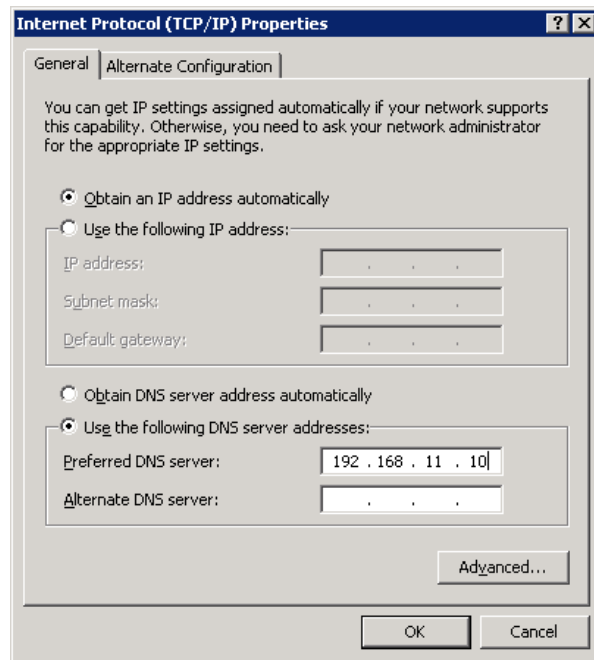


Figure 6: Add your Domain Controller as the DNS Server

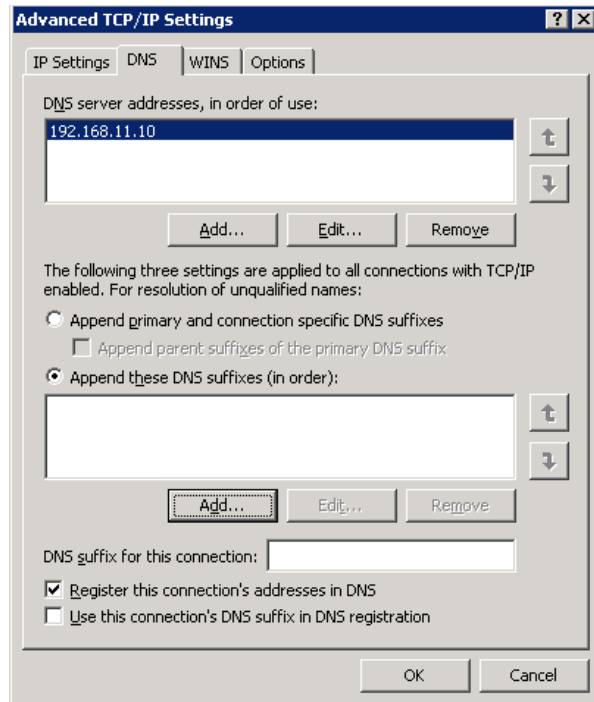


Figure 7: Add your Active Directory Domain Name

5 Using OpenVPN

To initiate a connection with the office, double click the new icon in your systray that looks like two computers with red screens.



Figure 8: OpenVPN icon: two computers with red screens

A window will pop up showing you that it is trying to connect and the two computer screens will turn yellow. When a connection is made the window will disappear and the two screens will turn green.

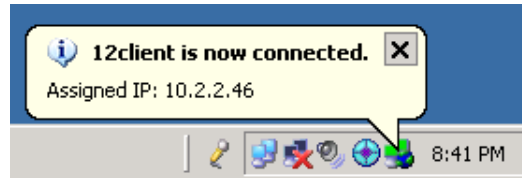


Figure 9: It worked!

When you are done with your work, remember to disconnect by Right Clicking the Green OpenVPN Icon and choosing disconnect!

At this point you may join the computer to your office domain (if it isn't already), set up outlook to use your Exchange server. Test your database program, etc. You should be able to print and share file just as if you were sitting in the office (again, with some bandwidth considerations!).